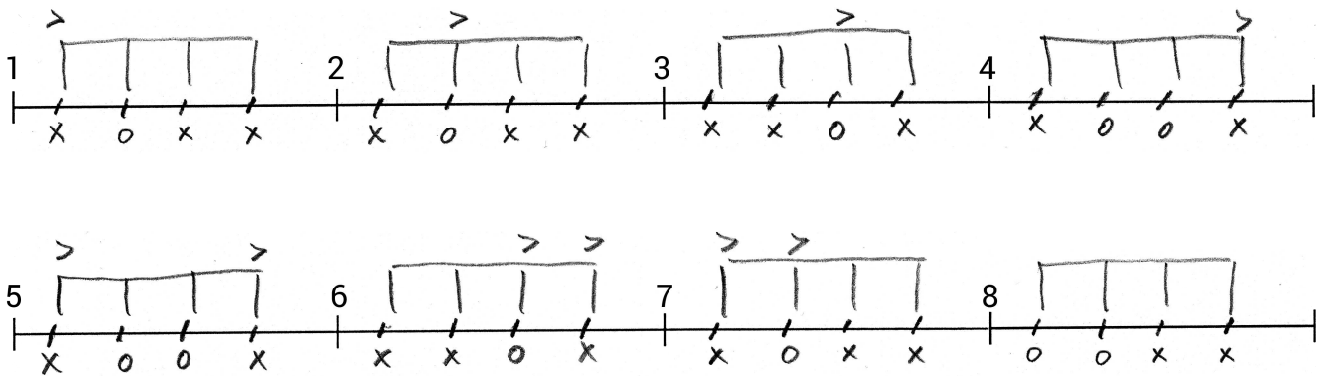


Paradiddle-diddles



Serie 1-2 : 1-8 + 2-8, 1-8 + 8-2, 8-1 + 2-8, 8-1 + 8-2 R & L

Serie 1-3 : 1-8 + 3-8, 1-8 + 8-3, 8-1 + 3-8, 8-1 + 8-3 R & L

OSV...

Serie 2-1 : 2-8 + 1-8, 2-8 + 8-1, 8-2 + 1-8, 8-2 + 8-1 R & L

Serie 2-3 : 2-8 + 3-8, 2-8 + 8-3, 8-2 + 3-8, 8-2 + 8-3 R & L

OSV...

Sambafötter i halvt tempo

Kombinera accenter på toms och virvel